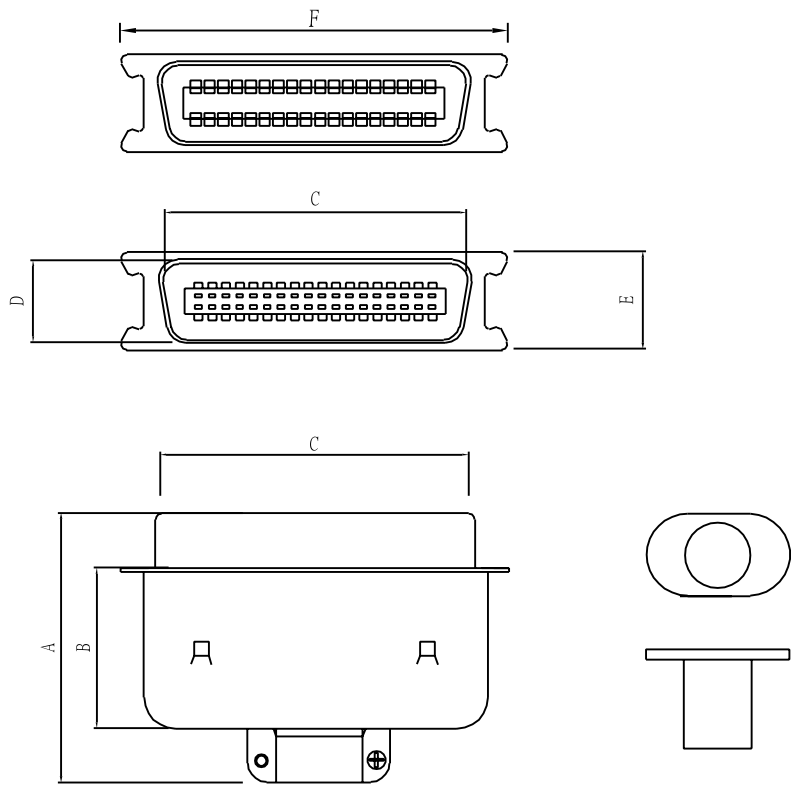


REV.	ECN NO	LOCATIONS	DESCRIPTION	DATE	REVISER	APPD



Note:

1.Material:

1.1 Insulator: High temperature thermoplastic with g.f,UL94v-0

1.2 Contact: Copper alloy,t=0.25mm

1.3 Shell: Spcc,t=0.40mm,50P Front-shell t=0.60mm

2.Specification:

2.1 Current rating: 1 A Max.

2.2 Dielectric withstanding voltage: 750 V(ac) for 1 min.

2.3 Contact resistance: 30 mΩ Max.

2.4 Insulation resistance: 1000 MΩ Min.

2.5 Total mating force: 9.0 Kgf Max.

2.6 Total unmating force: 5.0 Kgf Min.

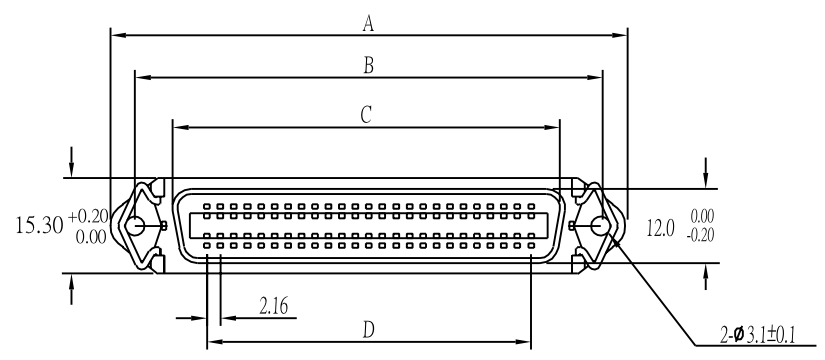
2.7 Temperature range: -55°C~85°C

8	Back-shell			
7	Front-shell			
6	Clip			No finish
5	Contact			Selective Au plated on mating area
4	Contact			
3	Contact			
2	Contact			
1	Housing			Black
No.	Name	Qty	Part No.	Finish

PART NO.	A±0.2	B±0.2	C±0.2	D±0.13	E±0.2	F±0.2
PNE02-14P	41.4	21.2	25.5	12.25	15.3	38.0
PNE02-24P	41.0	21.2	36.4	12.25	15.3	48.8
PNE02-36P	42.4	22.6	49.3	12.25	15.3	62.0
PNE02-50P	45.0	24.8	64.4	12.25	15.3	77.0

PART NO:		MATERIAL:			
MODEL NO:		FINISH:			
UNIT: mm	SIZE:	COLOR:		PART NAME: CENTRONIC SOLDER(M)ASSEMBLY	
TOLERANCE UNSPECIFIED		DR: ADWIN		DWC NO: PNE02-M	
.x ±0.3	.xx ±0.20	CHK: OK87		REV: A0	
.xxx ±0.100	ANG. ±1°	APP: H8288		SCALE: 1:1	
				SHEET: 1 of 1	

REV.	ECN NO	LOCATIONS	DESCRIPTION	DATE	REVISER	APPD



Note:

1.Material:

1.1 Insulator: High temperature thermoplastic with g.f,UL94v-0

1.2 Contact: Copper alloy,t=0.25mm

1.3 Shell: Spcc,t=0.40mm,50P Front-shell t=0.60mm

2.Specification:

2.1 Current rating: 1 A Max.

2.2 Dielectric withstanding voltage: 750 V(ac) for 1 min.

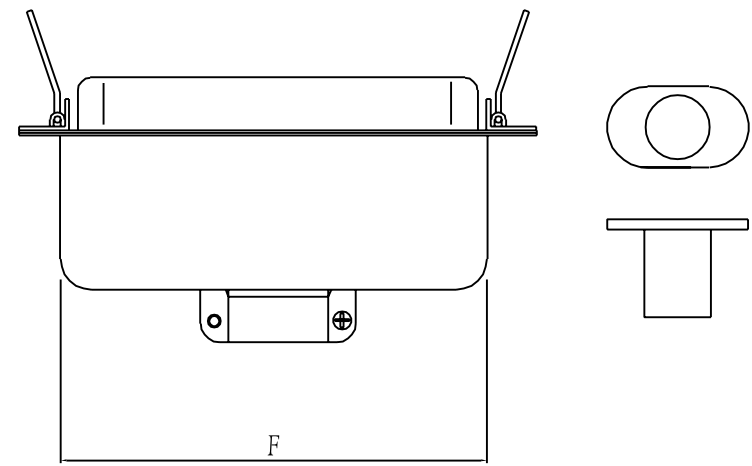
2.3 Contact resistance: 30 mΩ Max.

2.4 Insulation resistance: 1000 MΩ Min.

2.5 Total mating force: 9.0 Kgf Max.

2.6 Total unmating force: 1.0 Kgf Min.

2.7 Temperature range: -55°C~85°C



8	Back-shell			
7	Front-shell			
6	Clip			No finish
5	Contact			Selective Au plated on mating area
4	Contact			
3	Contact			
2	Contact			
1	Housing			Black
No.	Name	Qty	Part No.	Finish

PART NO.	A±0.2	B±0.2	C±0.2	D±0.03	E±0.2	F±0.2
PNE02-14S	43.92	35.99	25.2			29.0
PNE02-24S	54.71	46.79	36.0			39.8
PNE02-36S	67.69	59.74	48.9			53.0
PNE02-50S	82.78	74.85	64.0			68.1

PART NO:		MATERIAL:		Chang Enn Co., Ltd.	
MODEL NO:		FINSH:			
UNIT:	mm	SIZE:	COLOR:	PART NAME:	
TOLERANCE UNSPECIFIED		DR: <i>Yulong</i>		CENTRONIC SOLDER (F)ASSEMBLY	
.x	±0.3	CHK: <i>Nick</i>		DWG NO:	PNE02-F
.xx	±0.20	APP: <i>Kent</i>		SCALE:	1:1
.xxx	±0.100			SHEET:	1 of 1
ANG.	±1°				

