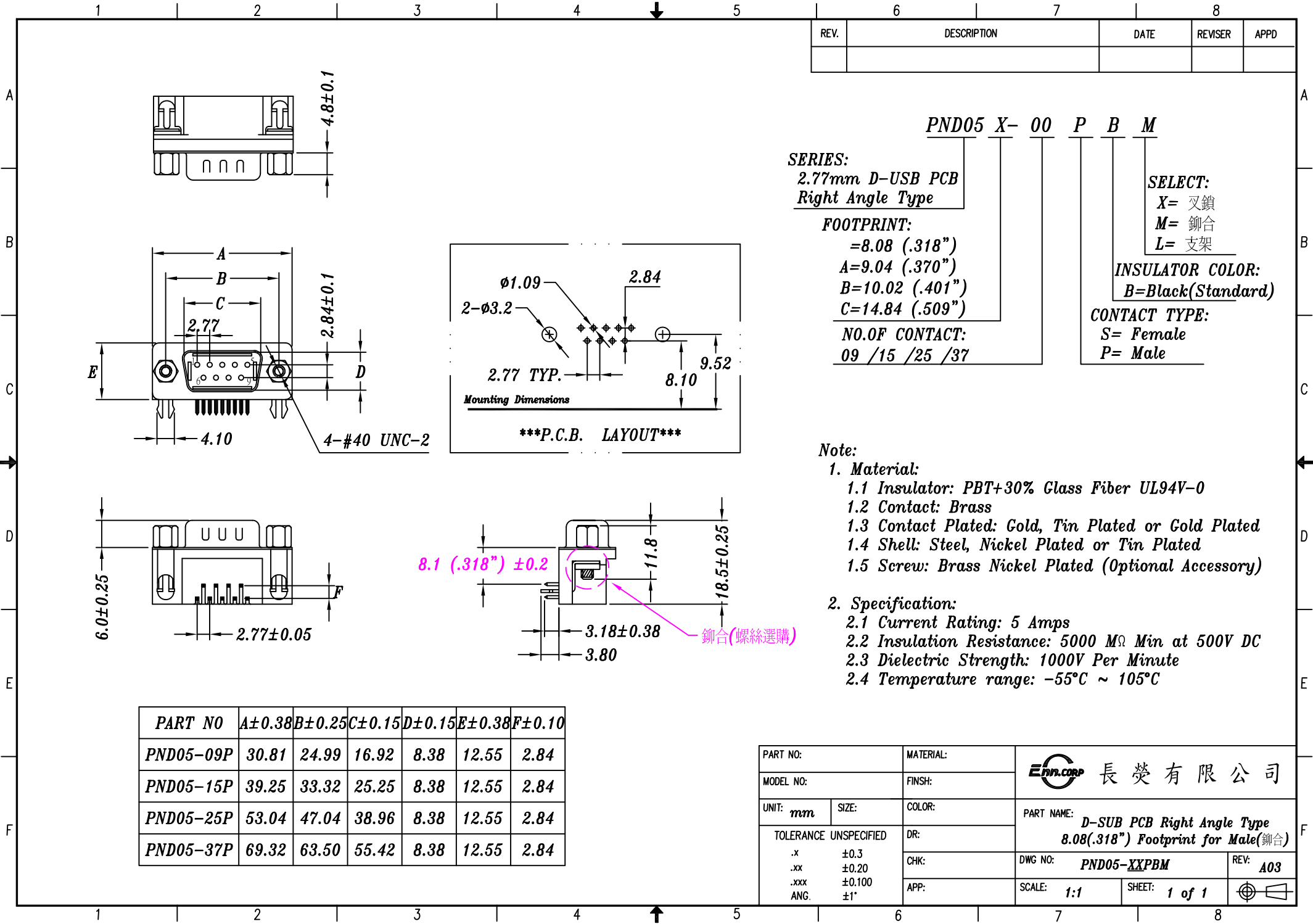


REV.	DESCRIPTION	DATE	REVISED	APPD



PND05 X- 00 P B M

SERIES:
2.77mm D-USB PCB
Right Angle Type

FOOTPRINT:
=8.08 (.318")
A=9.04 (.370")
B=10.02 (.401")
C=14.84 (.509")

NO.OF CONTACT:
09 /15 /25 /37

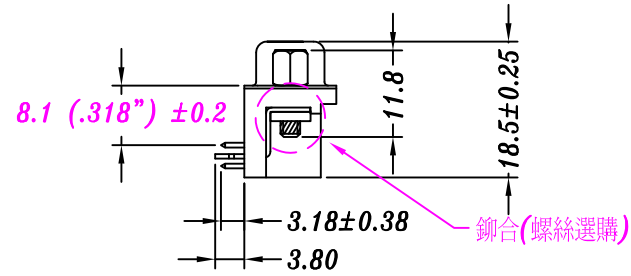
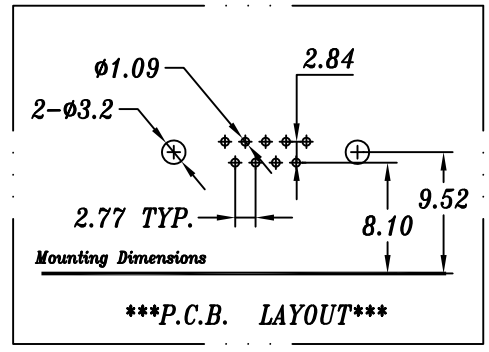
SELECT:
X= 叉鎖
M= 鉚合
L= 支架

INSULATOR COLOR:
B=Black(Standard)

CONTACT TYPE:
S= Female
P= Male

Note:

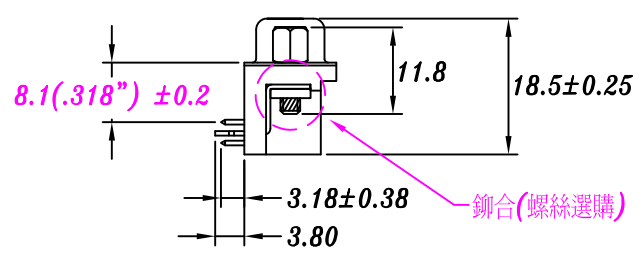
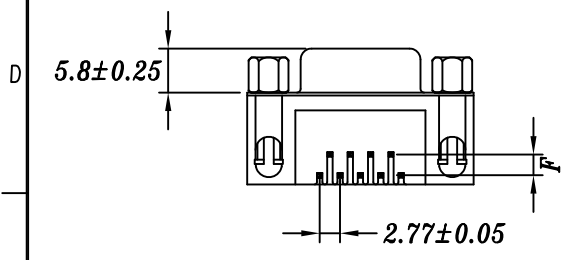
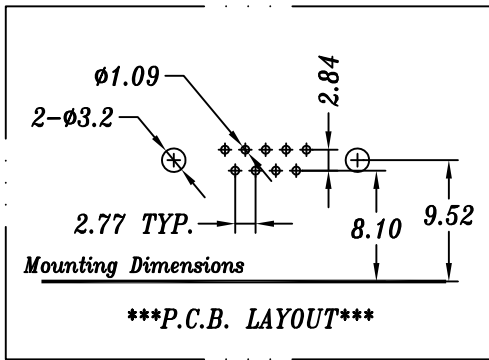
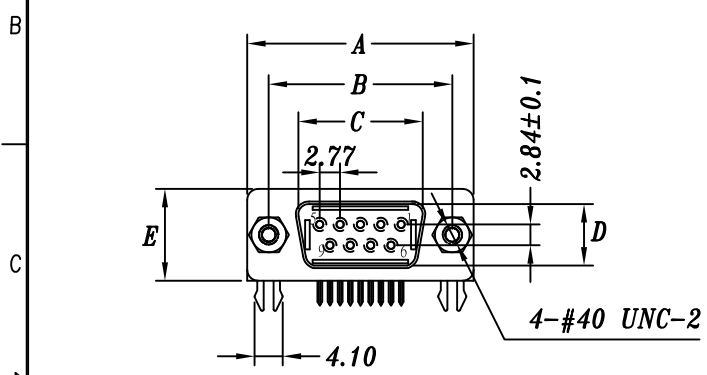
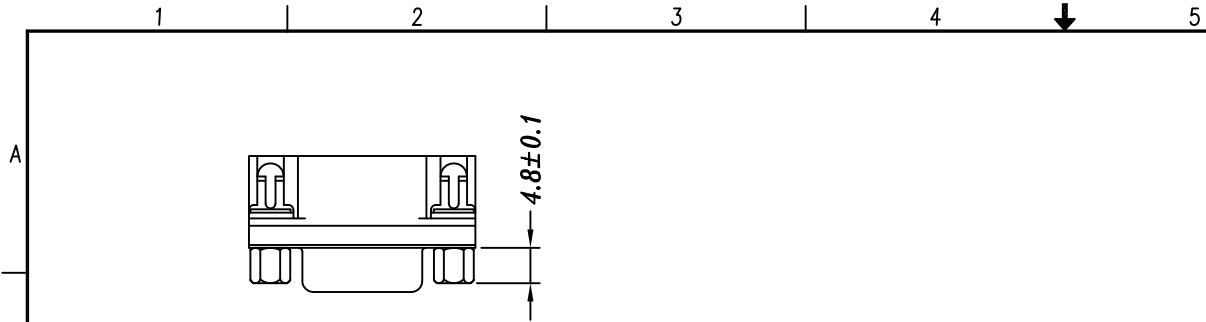
- Material:**
 - Insulator: PBT+30% Glass Fiber UL94V-0
 - Contact: Brass
 - Contact Plated: Gold, Tin Plated or Gold Plated
 - Shell: Steel, Nickel Plated or Tin Plated
 - Screw: Brass Nickel Plated (Optional Accessory)
- Specification:**
 - Current Rating: 5 Amps
 - Insulation Resistance: 5000 MΩ Min at 500V DC
 - Dielectric Strength: 1000V Per Minute
 - Temperature range: -55°C ~ 105°C



PART NO	A±0.38	B±0.25	C±0.15	D±0.15	E±0.38	F±0.10
PND05-09P	30.81	24.99	16.92	8.38	12.55	2.84
PND05-15P	39.25	33.32	25.25	8.38	12.55	2.84
PND05-25P	53.04	47.04	38.96	8.38	12.55	2.84
PND05-37P	69.32	63.50	55.42	8.38	12.55	2.84

PART NO:		MATERIAL:		長榮有限公司	
MODEL NO:		FINSH:			
UNIT: mm	SIZE:	COLOR:		PART NAME: D-SUB PCB Right Angle Type	
TOLERANCE UNSPECIFIED		DR:		8.08(.318") Footprint for Male(鉚合)	
.x	±0.3	CHK:		DWG NO: PND05- XX PBM	REV: A03
.xx	±0.20	APP:		SCALE: 1:1	SHEET: 1 of 1
.xxx	±0.100				
ANG.	±1°				

REV.	DESCRIPTION	DATE	REVISED	APPD



PND05 X- 00 S B M

SERIES:
2.77mm D-USB PCB
Right Angle Type

FOOTPRINT:
=8.08 (.318")
A=9.04 (.370")
B=10.02 (.401")
C=14.84 (.509")

NO.OF CONTACT:
09 /15 /25 /37

SELECT:
X= 叉鎖
M= 鉚合
L= 支架

INSULATOR COLOR:
B=Black(Standard)

CONTACT TYPE:
S= Female
P= Male

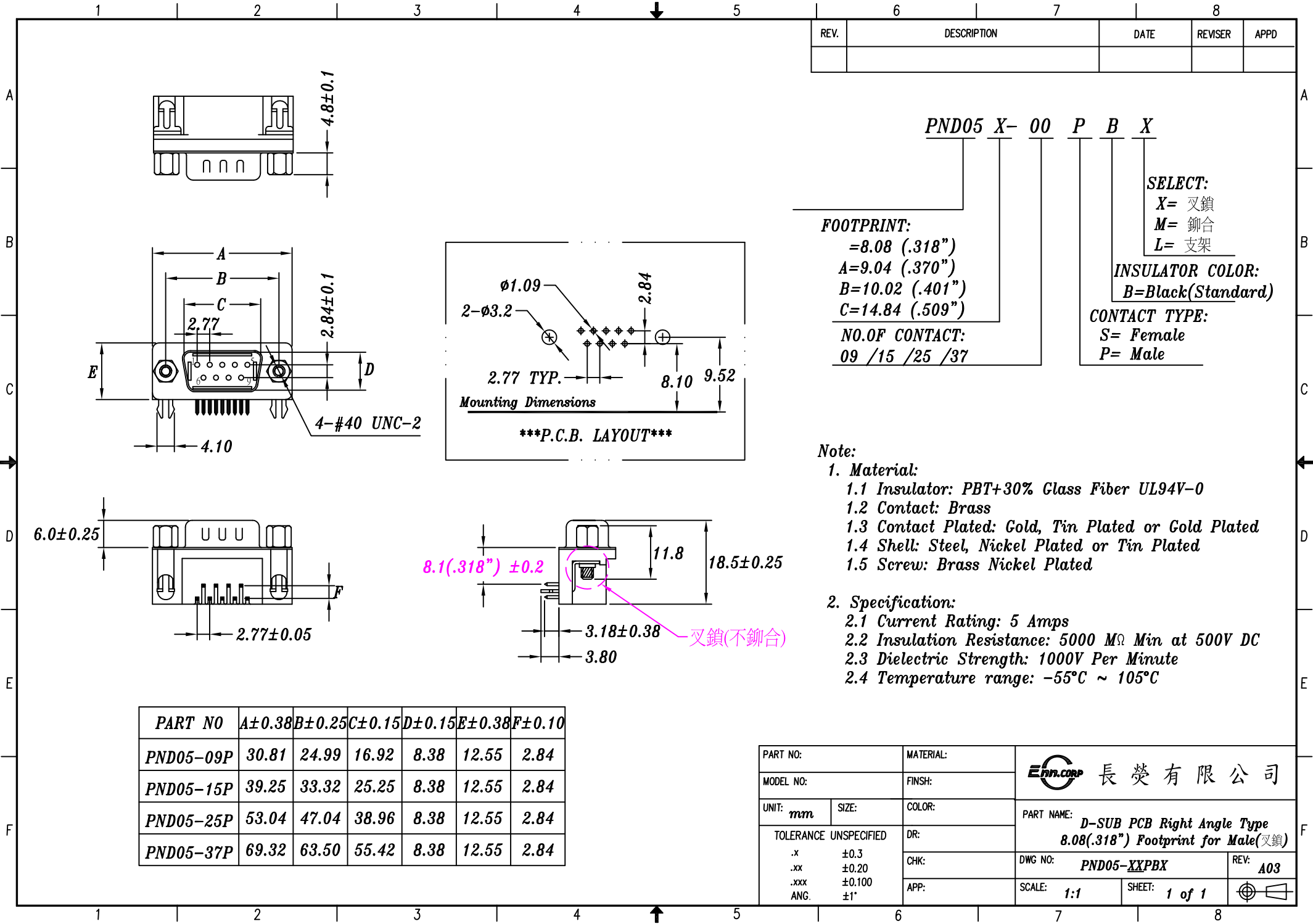
Note:

- Material:**
 - Insulator: PBT+30% Glass Fiber UL94V-0
 - Contact: Brass
 - Contact Plated: Gold, Tin Plated or Gold Plated
 - Shell: Steel, Nickel Plated or Tin Plated
 - Screw: Brass Nickel Plated (Optional Accessory)
- Specification:**
 - Current Rating: 5 Amps
 - Insulation Resistance: 5000 MΩ Min at 500V DC
 - Dielectric Strength: 1000V Per Minute
 - Temperature range: -55°C ~ 105°C

PART NO	A±0.38	B±0.25	C±0.15	D±0.15	E±0.38	F±0.10
PND05-09S	30.81	24.99	16.33	7.90	12.55	2.84
PND05-15S	39.25	33.32	24.66	7.90	12.55	2.84
PND05-25S	53.04	47.04	38.38	7.90	12.55	2.84
PND05-37S	69.32	63.50	54.84	7.90	12.55	2.84

PART NO:		MATERIAL:		長榮有限公司	
MODEL NO:		FINSH:			
UNIT: mm	SIZE:	COLOR:		PART NAME: D-SUB PCB Right Angle Type 8.08(.318") Footprint for Female(鉚合)	
TOLERANCE UNSPECIFIED		DR:		DWG NO: PND05- XX SBM	
.x	±0.3	CHK:		REV: A03	
.xx	±0.20	APP:		SCALE: 1:1	
.xxx	±0.100			SHEET: 1 of 1	
ANG.	±1°				

REV.	DESCRIPTION	DATE	REVISER	APPD



PND05 X- 00 P B X

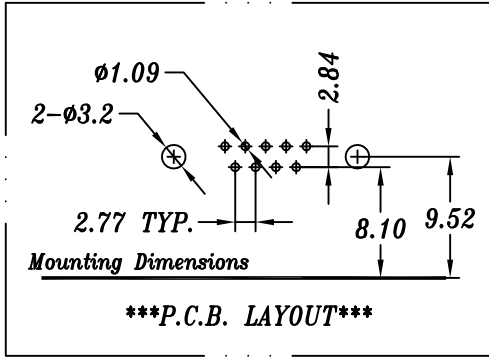
SELECT:

- X= 叉鎖
- M= 鉚合
- L= 支架

INSULATOR COLOR:
B=Black(Standard)

CONTACT TYPE:
S= Female
P= Male

FOOTPRINT:
=8.08 (.318")
A=9.04 (.370")
B=10.02 (.401")
C=14.84 (.509")
NO.OF CONTACT:
09 /15 /25 /37



Note:

1. Material:
 - 1.1 Insulator: PBT+30% Glass Fiber UL94V-0
 - 1.2 Contact: Brass
 - 1.3 Contact Plated: Gold, Tin Plated or Gold Plated
 - 1.4 Shell: Steel, Nickel Plated or Tin Plated
 - 1.5 Screw: Brass Nickel Plated
2. Specification:
 - 2.1 Current Rating: 5 Amps
 - 2.2 Insulation Resistance: 5000 MΩ Min at 500V DC
 - 2.3 Dielectric Strength: 1000V Per Minute
 - 2.4 Temperature range: -55°C ~ 105°C

PART NO	A±0.38	B±0.25	C±0.15	D±0.15	E±0.38	F±0.10
PND05-09P	30.81	24.99	16.92	8.38	12.55	2.84
PND05-15P	39.25	33.32	25.25	8.38	12.55	2.84
PND05-25P	53.04	47.04	38.96	8.38	12.55	2.84
PND05-37P	69.32	63.50	55.42	8.38	12.55	2.84

PART NO:		MATERIAL:		長榮有限公司	
MODEL NO:		FINSH:			
UNIT: mm	SIZE:	COLOR:		PART NAME: D-SUB PCB Right Angle Type	
TOLERANCE UNSPECIFIED		DR:		8.08(.318") Footprint for Male(叉鎖)	
.x	±0.3	CHK:		DWG NO: PND05- XX PBX	REV: A03
.xx	±0.20	APP:		SCALE: 1:1	SHEET: 1 of 1
.xxx	±0.100				
ANG.	±1°				

8.1(.318") ±0.2

11.8

18.5±0.25

3.18±0.38 叉鎖(不鉚合)

3.80

REV.	DESCRIPTION	DATE	REVISED	APPD

PND05 X- 00 S B X

SELECT:

- X= 叉鎖
- M= 鉚合
- L= 支架

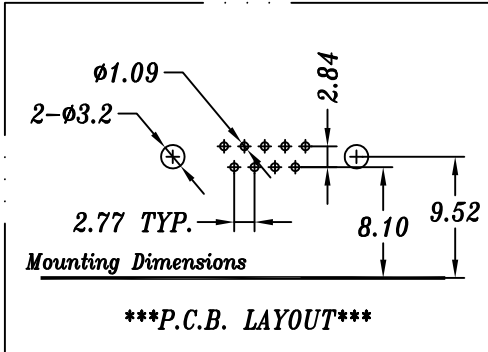
INSULATOR COLOR:
B=Black(Standard)

CONTACT TYPE:
S= Female
P= Male

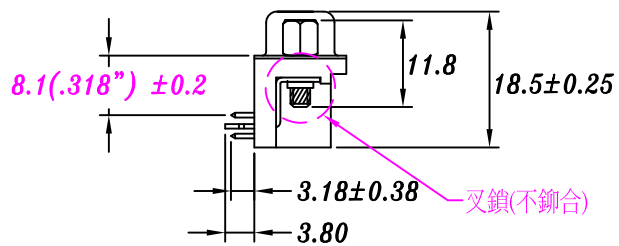
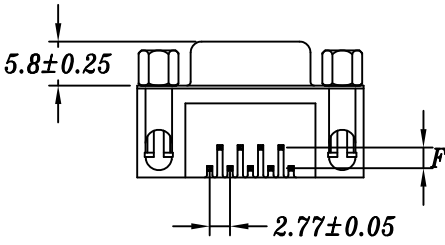
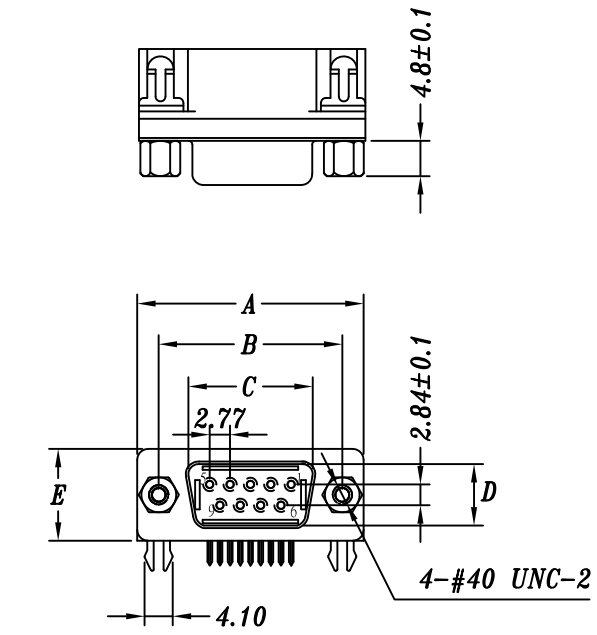
FOOTPRINT:
=8.08 (.318")
A=9.04 (.370")
B=10.02 (.401")
C=14.84 (.509")
NO.OF CONTACT:
09 /15 /25 /37

Note:

1. Material:
 - 1.1 Insulator: PBT+30% Glass Fiber UL94V-0
 - 1.2 Contact: Brass
 - 1.3 Contact Plated: Gold, Tin Plated or Gold Plated
 - 1.4 Shell: Steel, Nickel Plated or Tin Plated
 - 1.5 Screw: Brass Nickel Plated
2. Specification:
 - 2.1 Current Rating: 5 Amps
 - 2.2 Insulation Resistance: 5000 MΩ Min at 500V DC
 - 2.3 Dielectric Strength: 1000V Per Minute
 - 2.4 Temperature range: -55°C ~ 105°C



A
B
C
D
E
F



PART NO	A±0.38	B±0.25	C±0.15	D±0.15	E±0.38	F±0.10
PND05-09S	30.81	24.99	16.33	7.90	12.55	2.84
PND05-15S	39.25	33.32	24.66	7.90	12.55	2.84
PND05-25S	53.04	47.04	38.38	7.90	12.55	2.84
PND05-37S	69.32	63.50	54.84	7.90	12.55	2.84

PART NO:		MATERIAL:		長榮有限公司	
MODEL NO:		FINISH:			
UNIT: mm	SIZE:	COLOR:		PART NAME: D-SUB PCB Right Angle Type	
TOLERANCE UNSPECIFIED		DR:		8.08(.318") Footprint for Female(叉鎖)	
.x	±0.3	CHK:		DWG NO: PND05- XX SBX	REV: A03
.xx	±0.20	APP:		SCALE: 1:1	SHEET: 1 of 1
.xxx	±0.100				
ANG.	±1°				

1 2 3 4 5 6 7 8

REV.	DESCRIPTION	DATE	REVISER	APPD

PND05 X- 00 P B L

SERIES:
2.77mm D-USB PCB
Right Angle Type

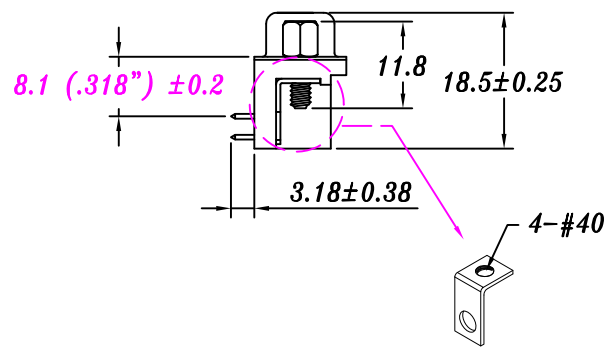
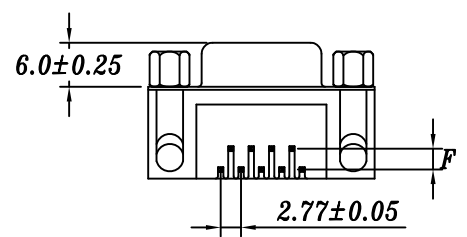
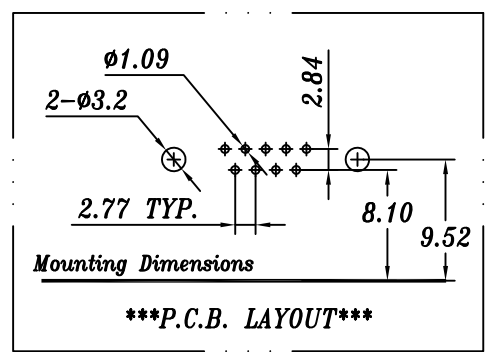
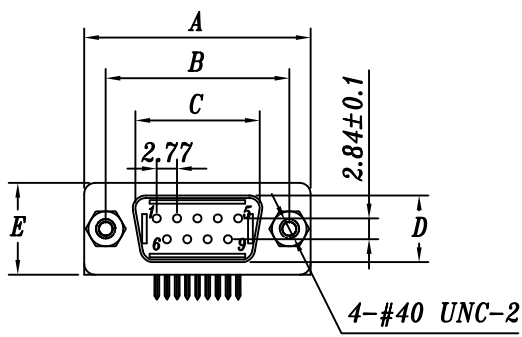
FOOTPRINT:
=8.08 (.318")
A=9.04 (.370")
B=10.02 (.401")
C=14.84 (.509")

NO.OF CONTACT:
09 /15 /25 /37

SELECT:
X= 叉鎖
M= 鉚合
L= 支架

INSULATOR COLOR:
B=Black(Standard)

CONTACT TYPE:
S= Female
P= Male



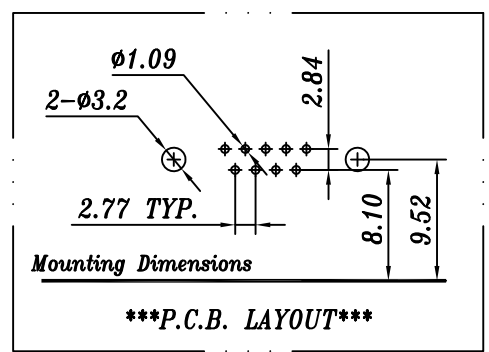
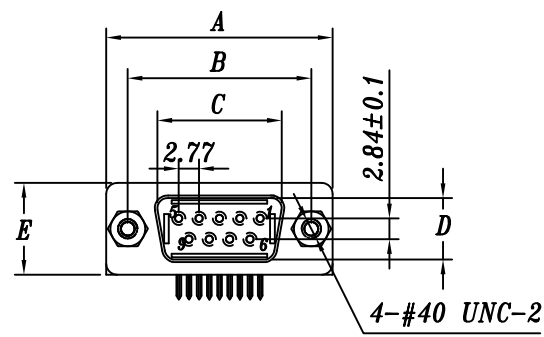
Note:

- Material:**
 - Insulator: PBT+30% Glass Fiber UL94V-0
 - Contact: Brass
 - Contact Plated: Gold, Tin Plated or Gold Plated
 - Shell: Steel, Nickel Plated or Tin Plated
 - Screw: Brass Nickel Plated (Optional Accessory)
- Specification:**
 - Current Rating: 5 Amps
 - Insulation Resistance: 5000 MΩ Min at 500V DC
 - Dielectric Strength: 1000V Per Minute
 - Temperature range: -55°C ~ 105°C

PART NO	A±0.38	B±0.25	C±0.15	D±0.15	E±0.38	F±0.10
PND05-09P	30.81	24.99	16.92	8.38	12.55	2.84
PND05-15P	39.25	33.32	25.25	8.38	12.55	2.84
PND05-25P	53.04	47.04	38.96	8.38	12.55	2.84
PND05-37P	69.32	63.50	55.42	8.38	12.55	2.84

PART NO:		MATERIAL:		長榮有限公司	
MODEL NO:		FINSH:			
UNIT: mm	SIZE:	COLOR:		PART NAME: D-SUB PCB Right Angle Type 8.08(.318") Footprint for Male(支架)	
TOLERANCE UNSPECIFIED		DR:		DWG NO: PND05- <u>XX</u> PBL	
.x	±0.3	CHK:		REV: A03	
.xx	±0.20	APP:		SCALE: 1:1	
.xxx	±0.100			SHEET: 1 of 1	
ANG.	±1°				

REV.	DESCRIPTION	DATE	REVISED	APPD



PND05 X- 00 S B L

SERIES:
 2.77mm D-USB PCB
 Right Angle Type

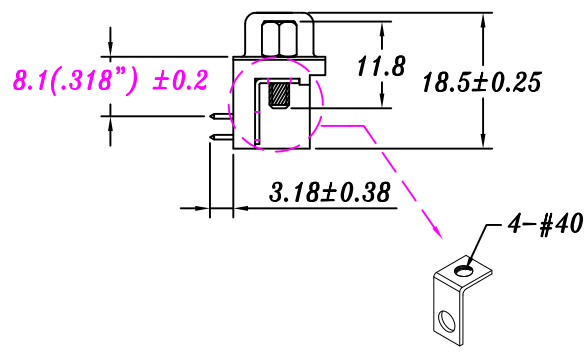
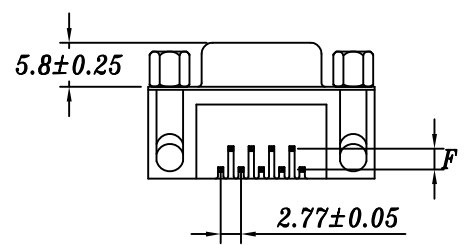
FOOTPRINT:
 =8.08 (.318")
 A=9.04 (.370")
 B=10.02 (.401")
 C=14.84 (.509")

NO.OF CONTACT:
 09 /15 /25 /37

SELECT:
 X= 叉鎖
 M= 鉚合
 L= 支架

INSULATOR COLOR:
 B=Black(Standard)

CONTACT TYPE:
 S= Female
 P= Male



L型支架

Note:

- Material:**
 - Insulator: PBT+30% Glass Fiber UL94V-0
 - Contact: Brass
 - Contact Plated: Gold, Tin Plated or Gold Plated
 - Shell: Steel, Nickel Plated or Tin Plated
 - Screw: Brass Nickel Plated (Optional Accessory)
- Specification:**
 - Current Rating: 5 Amps
 - Insulation Resistance: 5000 MΩ Min at 500V DC
 - Dielectric Strength: 1000V Per Minute
 - Temperature range: -55°C ~ 105°C

PART NO	A±0.38	B±0.25	C±0.15	D±0.15	E±0.38	F±0.10
PND05-09S	30.81	24.99	16.33	7.90	12.55	2.84
PND05-15S	39.25	33.32	24.66	7.90	12.55	2.84
PND05-25S	53.04	47.04	38.38	7.90	12.55	2.84
PND05-37S	69.32	63.50	54.84	7.90	12.55	2.84

PART NO:		MATERIAL:		長榮有限公司	
MODEL NO:		FINSH:			
UNIT: mm	SIZE:	COLOR:		PART NAME: D-SUB PCB Right Angle Type 8.08(.318") Footprint for Female(支架)	
TOLERANCE UNSPECIFIED		DR:		DWG NO: PND05- <u>XX</u> SBL	
.x	±0.3	CHK:		REV: A03	
.xx	±0.20	APP:		SCALE: 1:1	
.xxx	±0.100	SHEET: 1 of 1			
ANG.	±1°				