

# HIGH DENSITY DIP PLUG

PITCH: 1.27mm

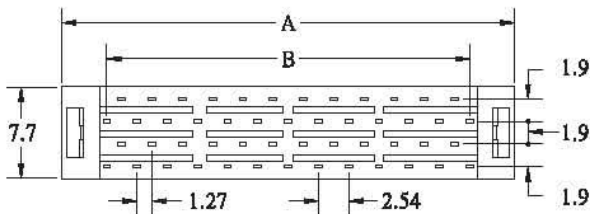
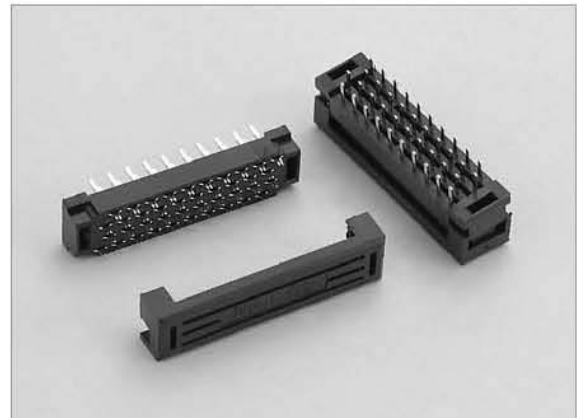
## SPECIFICATIONS

### Material

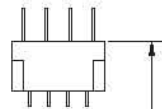
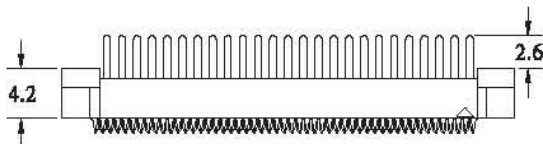
Insulator : PBT, glass reinforced, rated UL 94V-0  
Contact : Phosphor Bronze

### Electrical

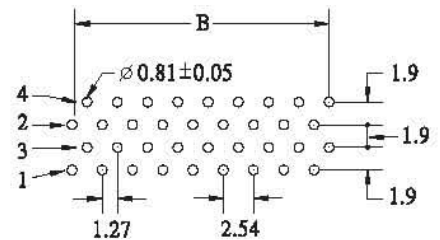
Current Rating : 1 Amp  
Contact Resistance : 30 mΩ max.  
Insulation Resistance : 1000 MΩ min.  
Dielectric Withstanding Voltage : 250V AC for 1minute  
Operating Temperature : -40°C to +105°C  
♦ Terminated with 0.635mm pitch flat ribbon cable.



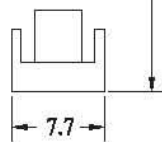
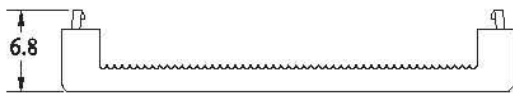
POSITION	A	B
10	12.63	5.08
20	18.98	11.43
26	22.79	15.24
30	25.33	17.78
34	27.87	20.32
40	31.68	24.13
50	38.03	30.48
68	49.46	41.91
80	57.08	49.53
100	69.78	62.23



(6.9)  
TERMINATED  
HEIGHT



RECOMMENDED P.C.B. LAYOUT



## HOW TO ORDER:

PNH01 -  -  -  -

1.NO. OF CONTACT	2.CONTACT MATERIAL	3.CONTACT PLATING	4.INSULATOR COLOR
10 20 26 30 34 40 50 68 80 100	B: PHOSPHOR BRONZE	T: TIN PLATED S: SELECTIVE G: GOLD FLASH A: 5u" INCH GOLD B: 10u" INCH GOLD C: 15u" INCH GOLD D: 30u" INCH GOLD	1. BLACK